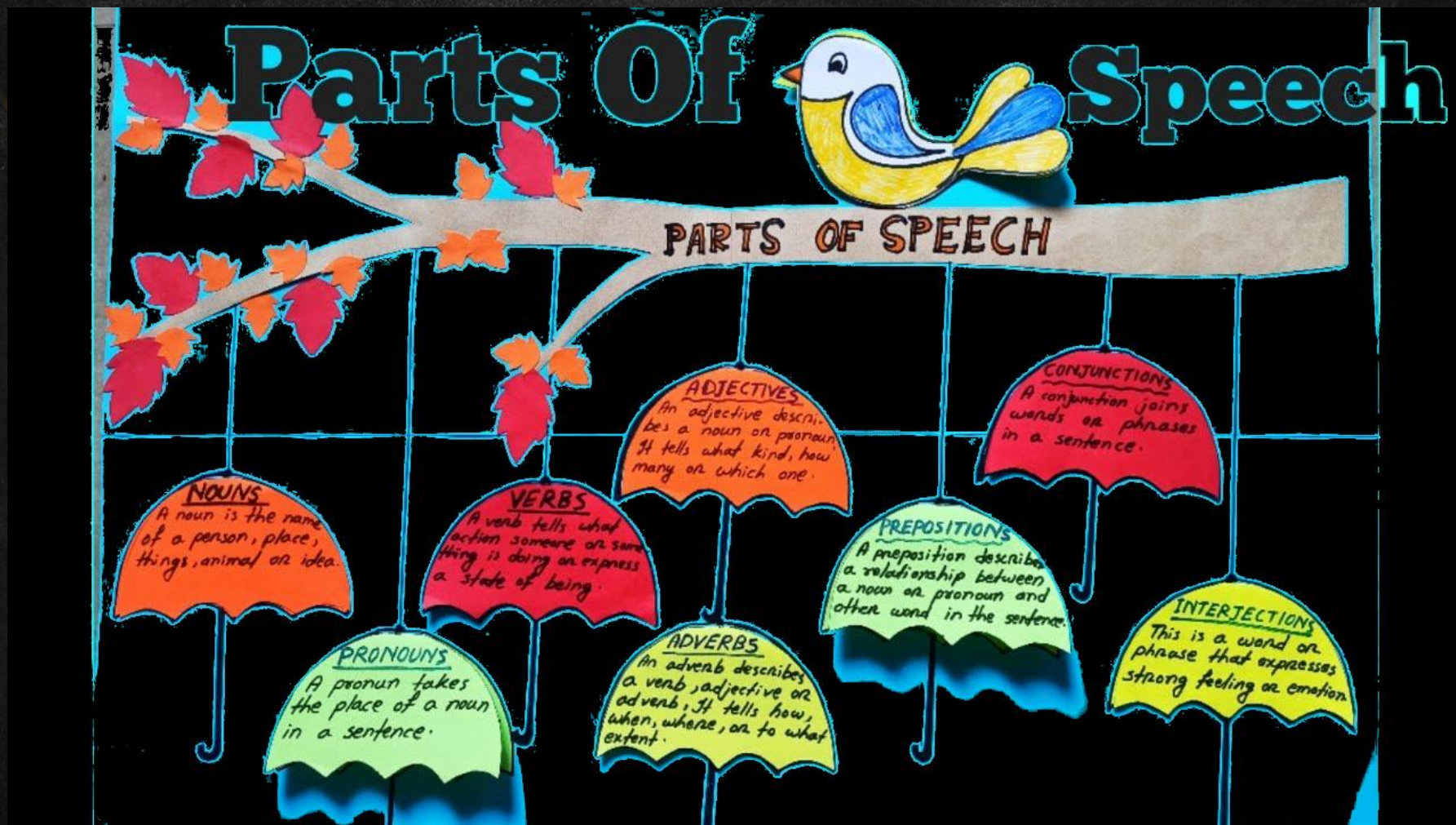


THE NOUN





Hi,
everybody!

Today we are going to
talk about: **THE
NOUN!**

But, first of
all: what is a
noun?



nouns



person



place



thing



animal

To form the plural
of the noun is just a
piece of cake!

You must add
an **-S** to the
noun , but.....

...if the noun ends in
s-ss-sh-ch-x-
z-o you must add :
-ES





It is a matter of
how the plural
sounds!

If you added only
an -S it would be
impossible to
distinguish the
plural form!



SINGULAR

PLURAL



CHAIR



CHAIRS



PEACH



PEACHES



BUS



BUSES



CHURCH



CHURCHES



WATCH OUT! If a
noun ends in **Y**
and it is preceded
by a
consonant....

...like **CITY**, for
example, the
plural will be....



CITI**ES**



SINGULAR

PLURAL



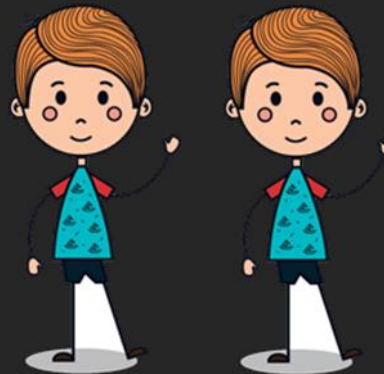
BABY (C+Y)



BABIES



BOY (V+Y)



BOYS

There are also
some nouns with
an irregular
plural....

But don't
worry they are
just a few!



Irregular Plurals

- MAN
- WOMAN
- CHILD
- FOOT
- TOOTH
- GOOSE
- MOUSE
- LOUSE
- PERSON
- OX
- MEN
- WOMEN
- CHILDREN
- FEET
- TEETH
- GEENSE
- MICE
- LICE
- PEOPLE
- OXEN



Irregular Plurals in -F -FE

- | | |
|---------|-----------|
| • KNIFE | • KNIVES |
| • WIFE | • WIVES |
| • LIFE | • LIVES |
| • SHELF | • SHELVES |
| • THIEF | • THIEVES |
| • LOAF | • LOAVES |
| • LEAF | • LEAVES |
| • WOLF | • WOLVES |
| • SELF | • SELVES |
| • HALF | • HALVES |



This is all for
today, folks!

Have a great
weeeek-end !
Bye!

